



CONNECTOR MOUNTING OPTIONS

Versirak is designed for use with DIN41612 type connectors and motherboard/backplane mounting. Three types of subrack are available: TYPE 1 to accept DIN connectors directly; TYPE 2 to accept Motherboards; TYPE 3 which accepts both DIN connectors via add-on rails and Motherboards. This version can be fully upgraded for EMC if required.

PCB SIZES FOR 3U SUBRACKS

3U subracks accept 100 mm Eurocards vertically and double height 233,34mm Eurocards horizontally using the horizontal card mounting kit. 112mm PCBs can be fitted vertically using the low profile guide rail. Please note that where EMC is required TYPE 3 subracks will only accept PCBs shorter than the overall subrack depth.

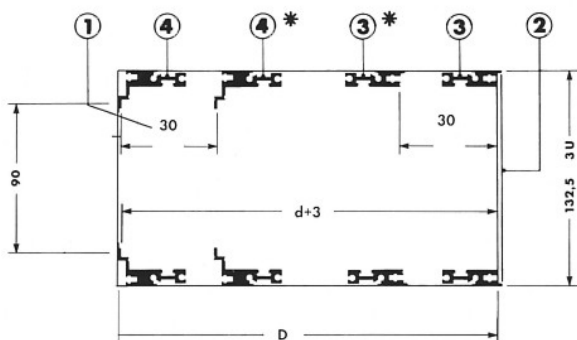
SHOCK AND VIBRATION TESTING

Versirak has been tested to IEC 571-1, which was applied to a standard 6U full width subrack which was fitted with EMC vented covers, front and rear panels and an evenly distributed internal load of 2.5 Kg . Frequency range 2,5 - 100Hz up to 1 gn . Sustained vibration for 15 minutes per axis at 1 gn . The unit was then subjected to further conditioning for 2 min per axis at 3 gn at a frequency of 50 Hz. Tests were carried out with and without top/bottom covers fitted, full test results are available on request .

HEAT DISSIPATION

To assist the system designer achieve optimum results with EMC and thermal performance, heat dissipation tests have been carried out on Versirak. The tests include dissipating up to 200W with the subrack fitted with solid cover, vented cover and without a cover .Full test results are available on request .

**3U x 42HP & 84HP
Type 1 DIN 41612**

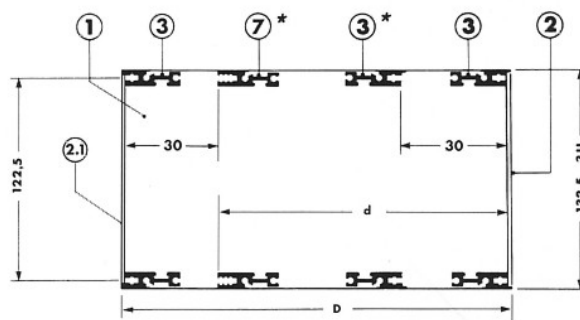


* Indicates alternative positions

Supplied in kit form comprising:

Ref	Description	Qty
1	Sideplate	2
2	T-Front Plate	2
3	Front Horizontal Rail	2
4	Connector Mounting Rail Screws M5 x 12mm, Pan Hd	8

**3U x 42HP & 84HP
Type 2 & Type 3 MOTHERBOARD**



* Indicates alternative positions

Supplied in kit form comprising:

Type 2 Type 3

Ref	Description	Qty	Qty
1	Sideplate	2	2
2	T-Front Plate	2	2
2.1	Closing Angle	-	2
2.2	Infill Panel 3U	-	2
3	Front Rail	2	4
7	Rear Horizontal Rail Screws M5	2	2
		8	12

ORDER CODES 3U SUBRACKS

WIDTH	SUBRACK TYPE	PCB DEPTH =			
		160	220	280	340
		D = 170	230	290	350
		d = 172,3	232,3	292,3	352,3
84HP	TYPE 1	97377H	97247G	97249D	97251M
	TYPE 2	97378R	97248F	97250B	97252E
	TYPE 3	-----	97395E	97396C	97397A
42HP	TYPE 1	97379G	97380F	97381D	97382B
	TYPE 2	97383M	97384E	97385C	97386A
	TYPE 3	CONFIGURE FROM PIECE PARTS			