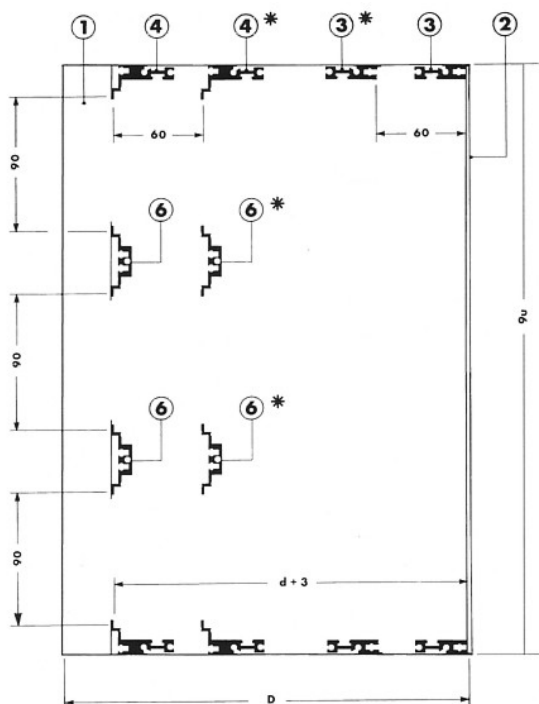


## PCB SIZES FOR 9U SUBRACKS

9U Subracks will accept 366,7mm Eurocards vertically and will also accept PCBs suitable for 3U and 6U subracks by fitting a subrack divider accessory kit . PCB depths are indicated in the table below, please note that where EMC is required, the TYPE 3 Subrack will only accept Board depths less than the overall depth of the subrack.

**9U x 84HP  
Type 1 DIN 41612**

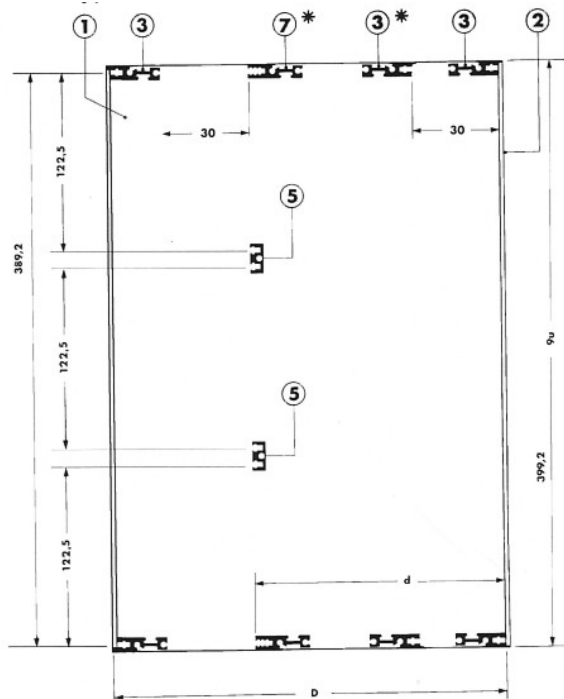


\* Indicates alternative positions

Supplied in kit form comprising:

Ref	Description	Qty
1	Sideplate	2
2	T-Front Plate	2
3	Front Horizontal Rail	2
4	Connector Mounting Rail	2
6	Centre Connector Mounting Rail	2
	Screws M5 x 12mm, Pan Hd	12

**9U x 84HP  
Type 2 & Type 3 MOTHERBOARD**



\* Indicates alternative positions

Supplied in kit form comprising:

Ref	Description	Qty	Qty
1	Sideplate	2	2
2	T-Front Plate	2	2
2.1	Closing Angle	-	2
2.2	Infill Panel	-	6
3	Front Rail	2	4
5	Centre Rail	2	2
7	Rear Horizontal Rail	2	2
	Screws M5 x 12mm, Pan Hd	12	16

Type 2 Type 3

## ORDER CODES 6U SUBRACKS

WIDTH	SUBRACK TYPE	PCB DEPTH =			
		160	220	280	340
		D = 170	230	290	350
		d = 172,3	232,3	292,3	352,3
84HP	TYPE 1	97637C	97640H	97259F	97261B
	TYPE 2	97638N	97641R	97260D	972562M
	TYPE 3	97639X	97401G	97402F	97403D